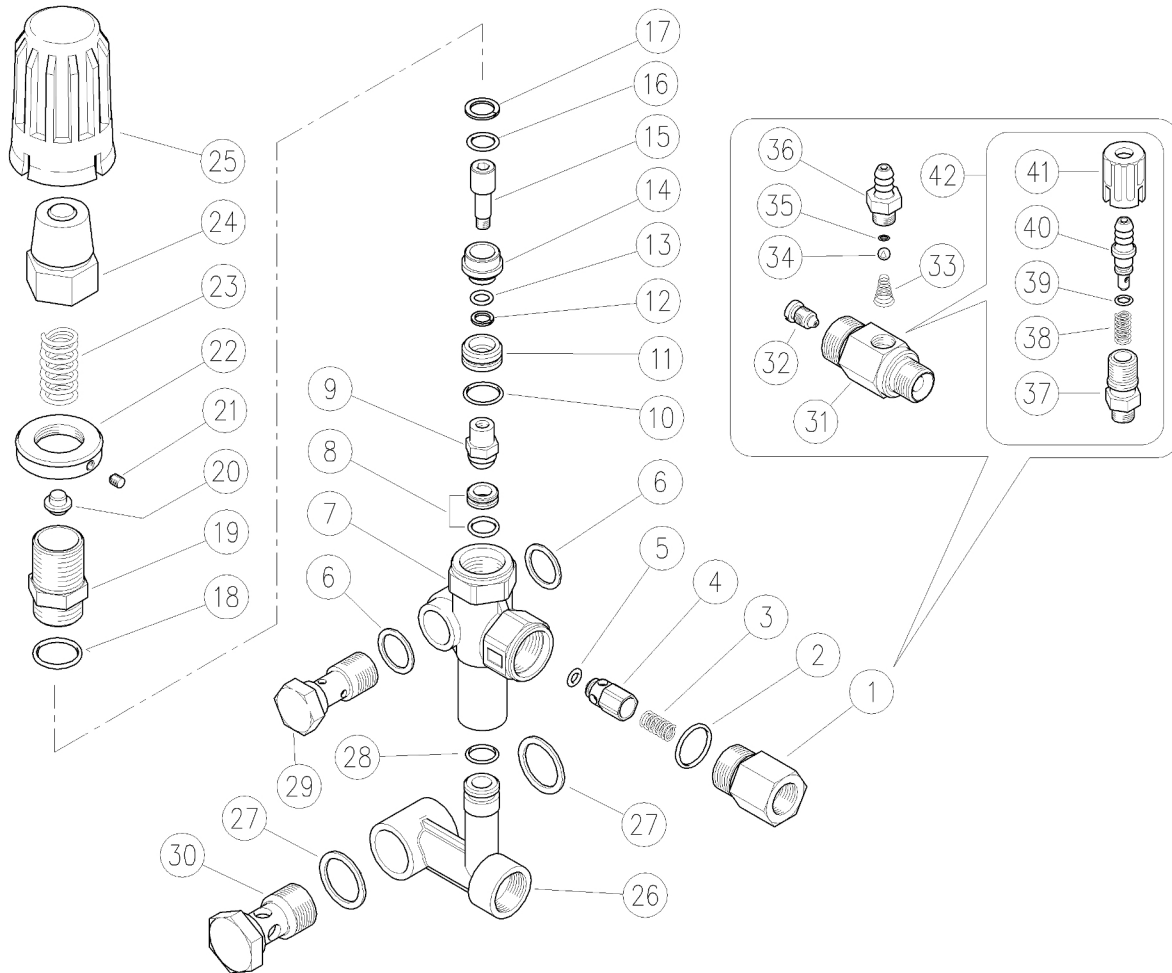


60.1350.10 VB56 unload. X:19 Y:62-73 3/8F Bsp



Pos.	P/N	Description	Q.ty	K1	K2	K3	K4	Pos.	P/N	Description	Q.ty	K1	K2	K3	K4
1	60.0058.31	Delivery coupl., 3/8F Bsp brass	1				5	24	60.1304.31	Valve regulating insert, brass	1				5
1	60.0103.31	Delivery coupl., 3/8M Bsp brass	1				5	25	60.1202.84	Valve regulating knob, PA black	1				5
1	60.0103.31	Delivery coupl., 3/8M Bsp brass	1				5	26	60.1352.35	Manifold, 1/2F Bsp brass (x19/y61-73)	1				3
2	10.3070.02	O-ring, 1,78x18,77 mm Ni 85	1	•			10	26	60.1373.35	Manifold, 1/2Bsp FF brass (x26/y66-76)	1				3
3	60.0053.51	Spring, 0,7x9x20 mm Sst.	1				10	26	60.1354.35	Manifold, 1/2F Bsp brass (x4,5/y53,5)	1				3
4	60.0052.99	Shutter pin, brass+o-ring 3x6 mm	1				10	26	60.1354.35	Manifold, 1/2F Bsp brass (x4,5/y53,5)	1				3
5	10.3213.00	O-ring, 3x6 mm	1	•			10	27	14.4101.00	Sealing washer, 1/2 Bsp	2				10
6	14.4100.00	Sealing washer, 3/8 Bsp	2				10	27	14.4101.00	Sealing washer, 1/2 Bsp	1				10
7	60.1351.35	Valve housing -VB55, brass	1				5	27	14.4046.00	Washer, 17x30x1,5 mm Cu	1				5
7	60.1355.35	Compact Housing -VB55, brass	1				5	28	10.3175.10	O-ring, 2,62x10,77 mm Vi 70	1				10
8	60.1306.20	Seat, 8mm+O-ring, 1,78mm NBR85	1	•			10	29	60.1007.31	Pierced crew, 3/8M Bsp 41,5mm brs.	1				10
9	60.1311.21	Shutter pin, M6 brass+ball, 13/32" Sst.	1	•			10	30	60.1008.31	Pierced crew, 1/2M Bsp 41,5mm brs.	1				10
10	10.3064.01	O-ring, 1,78x14 mm Ni 85	1	•			10	30	60.1366.31	Pierced screw, 3/8M Bsp-1/2" 41,5mm brs.	1				10
11	60.1318.31	Spacer ring, x o-ring d.18 mm brass	1				10	31	21.0261.31	Inject.hous.,M22x1,5M-3/8M Bsp brass **	1				3
12	10.4007.00	Back-up ring, opn. 7x10x1,2 mm	1	•			10	32	21.0213.51	Nozzle, M8x1 - 2,1 mm Sst. ***	1				10
13	10.3052.02	O-ring, 1,78x6,75 mm Ni 90	1	•			10	33	21.0160.51	Tapered spring, Sst. -inject.	1				10
14	60.1317.31	Spacer ring, 18,5 mm brass	1				10	34	14.7420.01	Ball, 7/32" Sst. Aisi 316	1				10
15	60.1307.51	Piston, M6 Sst.	1				10	35	10.3049.00	O-ring, 1,78x5,28 mm Vi 70	1				10
16	10.3175.08	O-ring, 2,62x10,77 mm Ni 85	1	•			10	36	21.0003.31	Hose barb, 8 - M12x1 mm brass	1				10
17	10.4017.00	Back-up ring, opn. 15,5x10,9x1,2 mm	1	•			25	37	21.0173.31	Coupling, M12x1-1/4M Bsp brass	1				10
18	10.3068.01	O-ring, 1,78x17,17 mm Ni 85	1	•			10	38	21.0158.51	Spring, 0,8x7x15 mm Sst.	1				10
19	60.1314.31	Piston holder, brass-VB56	1				10	39	10.3043.01	O-ring, 1,78x4,48 mm Vi 70	1				10
20	60.1313.31	Spring guide pin	1				10	40	21.0155.99	Hose barb, d.8 mm brass+o-ring	1				3
21	16.2100.00	Set screw, DIN914 M4x4 mm	1				10	41	21.0171.84	Inject.knob, 1/4F Bsp black	1				10
22	60.1312.31	Ring nut, M20x1 brass	1				10	42	21.0100.00	Regul.+h.barb 8-M12mm brs. inje.	1				50
23	60.1315.61	Spring, 3,4x13,8x48 mm z.pl.	1				10								

** On request

*** Different measures available

Kit	P/N	Description	Q.ty
K1	60.1321.24	Spares kit -VB5II°-VB56, 10x1pcs.	1