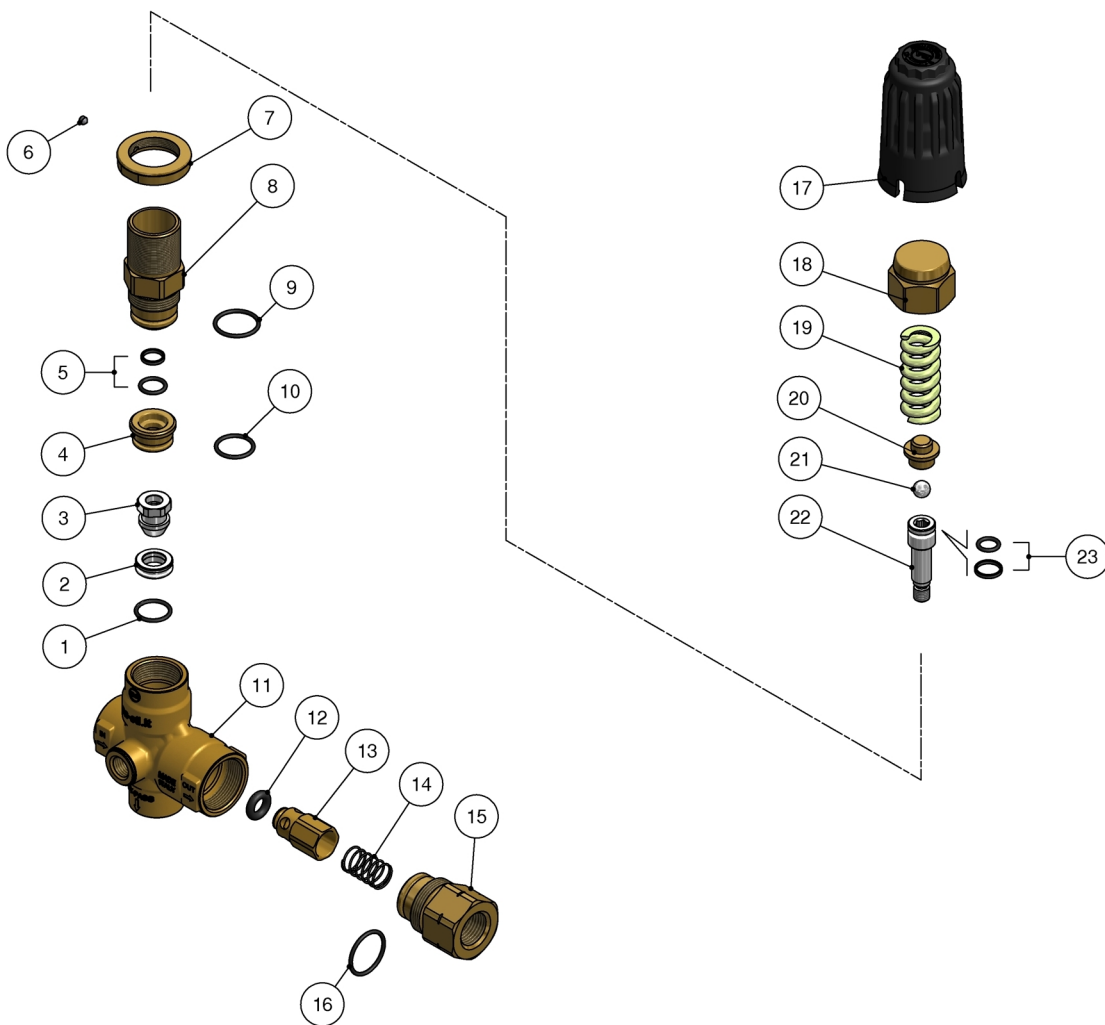


60.1850.00 VB33 unload. 1/2F Bsp brass  
60.1850.50 VB33 unload. 1/2F Npt brass

60.1860.00 VB36-350 unload. 1/2F Bsp brass  
60.1860.50 VB36-350 unload. 1/2F Npt brass



K1K2K3K4

1	10.3066.01RO-ring, 1,78x15,6 mm Ni 85	1	•			10
2	60.1809.51RSeat, 11,6x19x6 mm Sst.	1	•			5
3	60.1808.51RShutter pin, M8 Sst.	1	•			3
4	60.1810.31RSpacer ring, 10,3x23,4x12,5 mm brass	1				5
5	60.0979.24 Stem seal, 10x14,9x2,2 mm+O-ring	1	•			5
6	16.2100.00RSet screw, DIN914 M4x4 mm	1				10
7	60.1728.31RRing nut, M27x1 brass	1				10
8	60.0973.31RPiston holder, brass (1,2)	1				3
8	60.1805.31RPiston holder, brass (3,4)	1				3
9	10.3072.01RO-ring, 1,78x20,35 mm Ni 85	1	•			10
10	10.3068.01RO-ring, 1,78x17,17 mm Ni 85	1	•			10
11	60.1855.35RBrass VB33 body -1/2 Bsp F (1,3)	1				3
11	60.1851.35RBrass VB33 body (2,4)	1				3
12	10.3292.00RO-ring, 4x8 mm (1)	1	•			10

K1K2K3K4

13	60.0488.99RShutter pin, brass+or 4x8 mm	1				10
14	60.0489.51RSpring, 0,8x13,3x27 mm Sst.	1				5
15	60.2809.31RShutter coupl., 1/2F Bsp brass (1,3)	1				3
15	60.1852.31RShutter coupl., 1/2F Npt brass (2,4)	1				3
16	10.3072.60RO-ring, 1,78x21,95 mm Ni 85 (1)	1	•			10
17	60.1726.84RValve regulating knob, PA black (1,2)	1				10
17	60.1729.84RValve regulating knob, PA red (3,4)	1				10
18	60.1727.31RValve regulating knob, brass	1				5
19	60.0975.61RSpring, 4,2x19,7x42 mm z.pl. (1,2)	1				10
19	60.1812.61RSpring, 4,5x15,8x47mm (3,4)	1				3
20	60.1813.31RSpring rest pin, brass	1				5
21	14.7443.10RBall, 11/32" Sst.	1				10
22	60.1806.51RPiston, M8 Sst.	1				3
23	60.0978.24 Piston seal, 9x14x2,2 mm+O-ring	1	•			5

K1

K1	60.1854.24 Spares kit -VB 33, 11 x1pcs.	1				
----	---	---	--	--	--	--

(1) 60.1850.00 (2) 60.1850.50 (3) 60.1860.00 (4) 60.1860.50