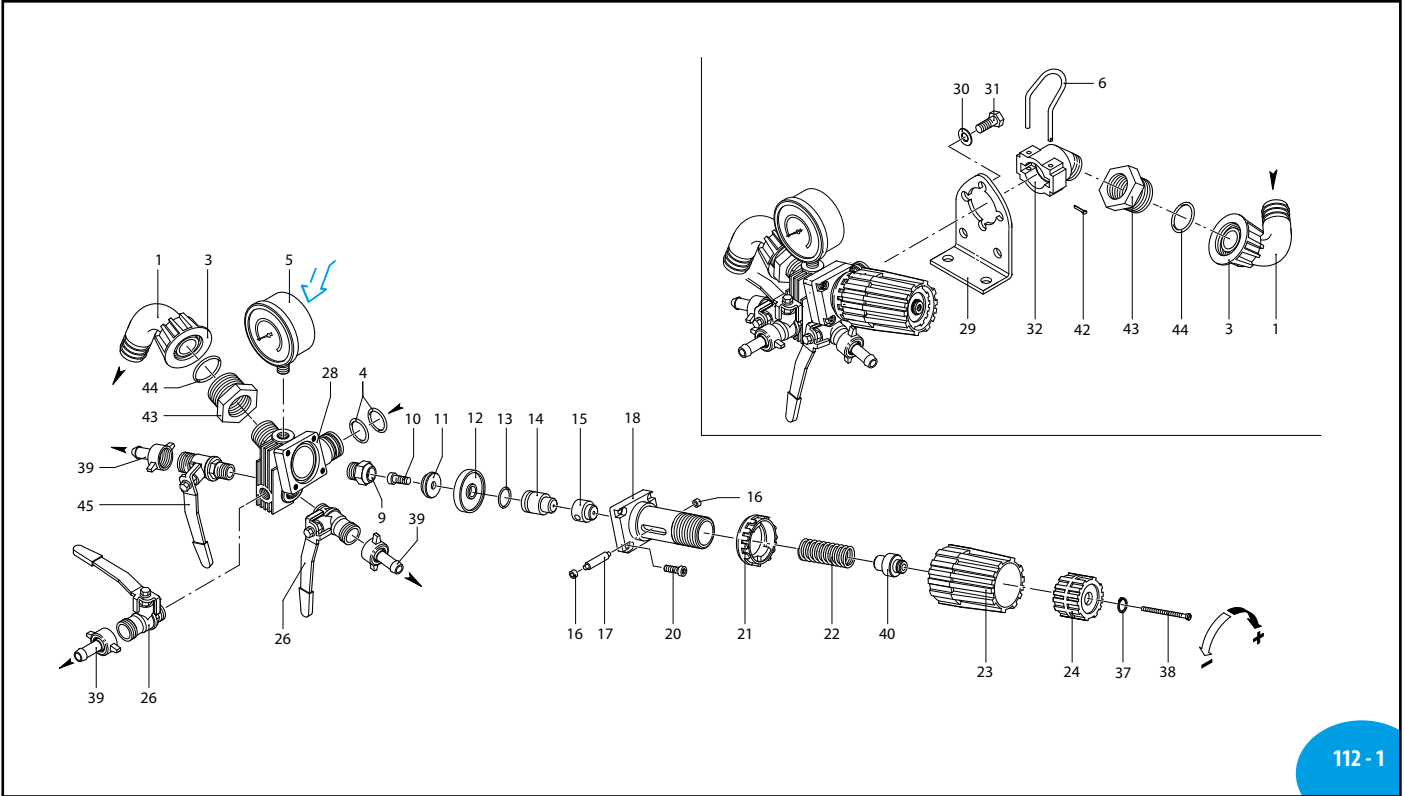


per/for	AR 70 bp
	AR 115 bp

RM 20 S	927
---------	-----

115 Series

CM 1158600

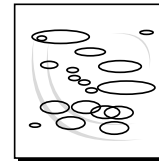


112 - 1

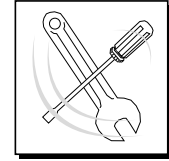
UN970176-LJ

Pos	Cod.	Descrizione	Description	Q.ty	Note
1	550370	Curva Ø 25	Elbow	2	
3	550880	Girello 1" G	Ring nut	2	
4	390180	Guarnizione OR Ø 18,72x2,62	O-ring	2	▶
5	391240	Manometro Ø63	Pressure gauge	1	0-24 bar ◀
6	1040690	Forcella	Fork	1	
9	1150520	Sede	Seat	1	◀ C ₂₀
10	680560	Vite TCEI M6x16	Screw	1	Inox ◀ C ₁₀
11	1040640	Valvola	Valve	1	Inox
12	1040631	Membrana	Diaphragm	1	NBR
13	1040630	Membrana	Diaphragm	1	Desmopan (opt.)
14	880830	Guarnizione OR Ø 15,54x2,62	O-ring	1	▶
15	1040621	Pistone	Piston	1	
16	1150560	Distanziale	Spacer	1	
17	1150600	Anello	Ring	2	
18	1150540	Perno	Hub pin	1	
20	1150510	Corpo superiore	Body	1	☒
21	780330	Vite TCEI M6x20	Screw	4	C ₁₀
22	1150530	Ghiera	Ring nut	1	☒
23	1150680	Molla	Spring	1	☒
24	1150550	Manopola	Knob	1	Rossa
26	1150570	Ghiera	Ring nut	1	
28	130491	Rubinetto	Valve	2	◀ C ₂₀
29	1150500	Corpo valvola	Valve body	1	
30	1150590	Staffa	Bracket	1	
31	390311	Rondella	Washer	2	
32	180431	Vite TE M8x16	Screw	2	C ₂₀
37	1040770	Raccordo	Fitting	1	
38	480550	Anello seeger Øe 12	Ring	1	
39	1150650	Vite TCTC M3x60	Screw	1	◀ C ₅
40	110131	Girello 1/2"	Ring nut	3	
42	1150660	Distanziale	Spacer	1	
43	1040950	Copiglia	Split pin	1	
44	800720	Raccordo 3/4" G - 1" G F-M	Fitting	2	
45	550350	Guarnizione OR Ø 23,81x2,62	O-ring	2	▶
	130492	Rubinetto 3/8" G - 1/2" G M-M SX	Valve	1	◀ C ₂₀

sp_rm20s.pdf



KIT 2382 OR O-Rings	
Pos.	Q.ty
4	2
13	1
44	2



KIT 2383 Pronto intervento (NBR) Maintenance repair			
Pos.	Q.ty	Pos.	Q.ty
4	2	22	1
6	1	23	1
9	1	24	1
11	1	37	1
12	1	38	1
13	1	40	1
15	1	42	1
17	1	44	2
21	1		



Posizione targa di identificazione.
Pump and manufacturer identification.