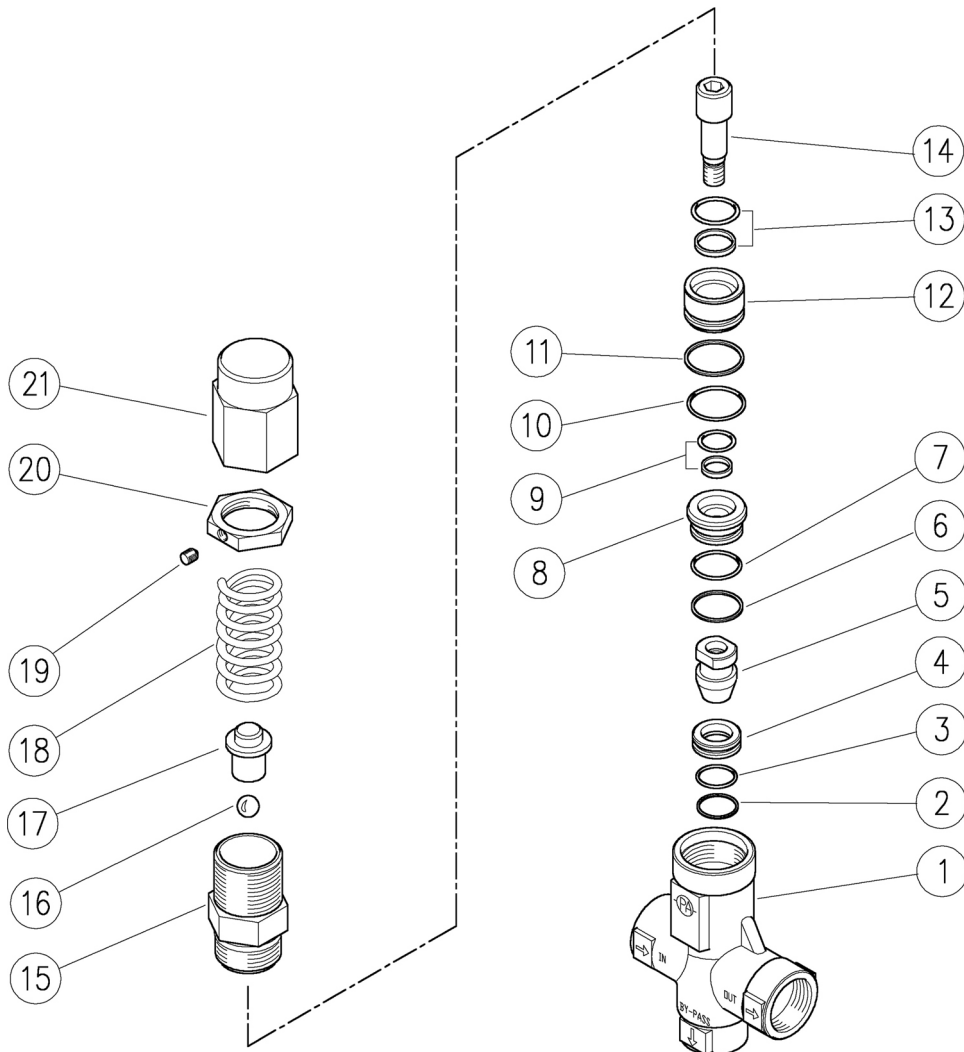


60.1530.00 VS24 Ai303 safety valv. 1/2F Bsp
 60.1535.00 VS43 Ai303 safety valv. 1/2F Bsp

60.5400.00 VRP 600 reg.val. Ai303 1/2F Bsp



K1K2K3K4

1	60.5401.55R	Sst. housing -VS23-VRP/P600, 1/2F Bsp	1					1
2	10.4036.17R	Back-up ring, 14x2x17x1,5 mm	1	•				10
3	10.3064.01R	RO-ring, 1,78x14 mm Ni 85	1	•				10
4	60.5404.51R	Seat, 9,2x17x7,5 mm Sst.	1	•				5
5	60.5403.51R	Shutter pin, M7 Sst.	1	•				3
6	10.4039.00R	Back-up ring, 15,7x18,5x1,5 mm	1	•				10
7	10.3066.01R	RO-ring, 1,78x15,6 mm Ni 85	1	•				10
8	60.5410.51R	Lower spacer ring, 8x21,4x11,5 mm Sst.	1					3
9	10.2008.00R	Stem seal, 8x13x2,2 mm +O-ring	1	•				5
10	10.3070.02R	RO-ring, 1,78x18,77 mm Ni 85	1	•				10
11	10.4057.00R	Back-up ring, 18,7x21,5x1,5 mm	1	•				10
12	60.5409.51R	Upper spacer ring, 8,3x21,5x17 mm Sst.	1					3
13	10.2013.00R	Stem seal, 12x17x2,2 mm +O-ring	1	•				5

K1K2K3K4

14	60.5408.51R	Piston, M7 Sst.	1					5
15	60.5407.51R	Piston holder, Sst.	1					5
16	14.7443.10R	Ball, 11/32" Sst.	1					10
17	60.5406.31R	Spring rest pin, brass	1					3
18	60.5402.61R	Spring, 5,4x22x64,5 mm z.pl.	1					3
18	60.1407.61R	Spring, 5x21,4x49 mm z.pl. (1)	1					3
18	60.0975.61R	Spring, 4,2x19,7x42 mm z.pl. (2)	1					10
19	16.2100.00R	Set screw, DIN914 M4x4 mm	1					10
20	60.1814.31R	Ring nut, M27x1 brass	1					5
21	60.5405.31R	Valve regulating ring nut, M27x1 brass	1					3
21	60.1408.31R	Valve regulating knob, M27 brass (1)	1					5
21	60.1727.31R	Valve regulating knob, brass (2)	1					5

K1

K1	60.5411.24	Spares kit -VRP/P 600, 10x1pcs.	1					1
----	------------	---------------------------------	---	--	--	--	--	---

(1) 60.1535.00 (2) 60.1530.00